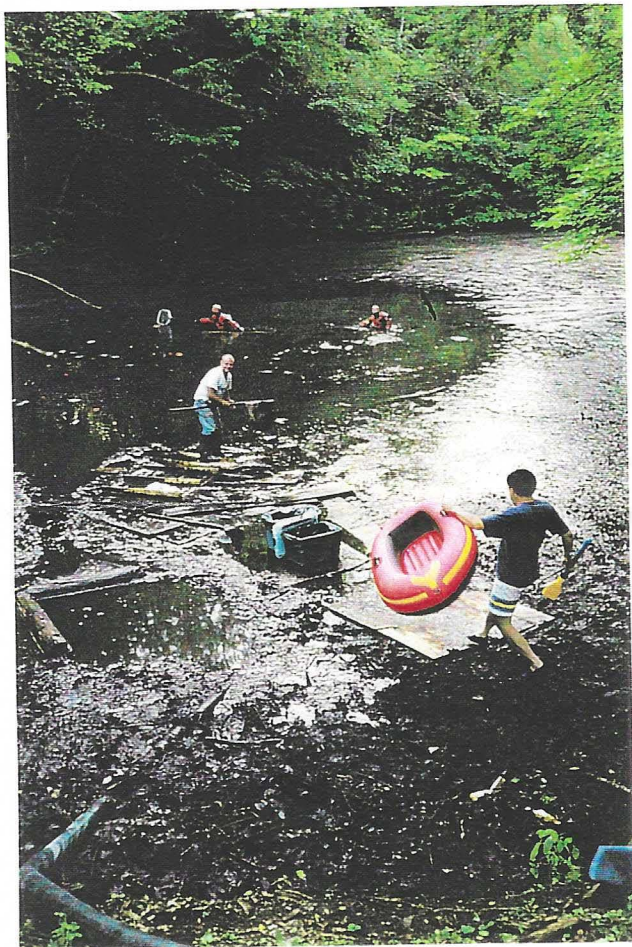


WYCHWOOD POND NEWSLETTER, NO. THREE, AUGUST 25, 1989

During the past weeks, work to drain the pond and begin dredging has been carried on. However, due to the extremely fine nature of the sediments, they have remained in a semi-liquid state even during this past month of relatively dry weather and the pumping efforts. On August 19, about 60 tonnes of stone was brought in to build a ramp into the pond from which to provide an access point for the dredging machine. The sediments beneath the stone failed to provide sufficient support however, and the dredger had to be removed.

Because of the semi-liquid state of the sediments and their great depth - at least 13 feet near the outlet - Galcon will not be able to use swamp mats as previously planned to support the dredger and manoeuvre it around the pond. They intend to bring in additional stone to support the dredger in the southeast corner of the pond and dredge there, establishing a low spot to which it is expected the sediments will flow. From this low point, the sediments will then be dug out and trucked to Greenwood Park. (The developer at Greenwood has indicated that it is willing to take the sediments in this semi-liquid state.)

On Monday, August 24, Galcon plans to bring in another 60 tonnes of stone to stabilize the ramp and commence the dredging operations. The Trustees are aware of the problems that Galcon is encountering on this project and have confidence that the company can surmount them and complete the work. The urgent need for restoration has been made dramatically evident by the surprisingly shallow, saucer-like contour of the muddy bottom and the rotten logs of the embankments.



Editor: Julia McArthur
12 Wychwood Park
656-5844

Photo: Tom Bonic
"Fishing in Wychwood Park"